

Project Data

Const. Estimate: \$14,000,000
Const. Contract: \$13,755,000
Const. Actual: \$13,843,483
Const. Start: 2/23/2016
Scheduled Complete: 8/1/2017
Actual Completion: 8/1/2017
Type: New Building
Size: 66,500 sf
Referendum: Yes
Engineer Change Orders:
1 @ \$8,120
Chapter 573 Claims: None
Litigation: None

Owner

Iowa City Community
School District
Duane VanHemert
Physical Plant Director
319.688.1020
VanHemert.Duane@
iowacityschools.org

Team

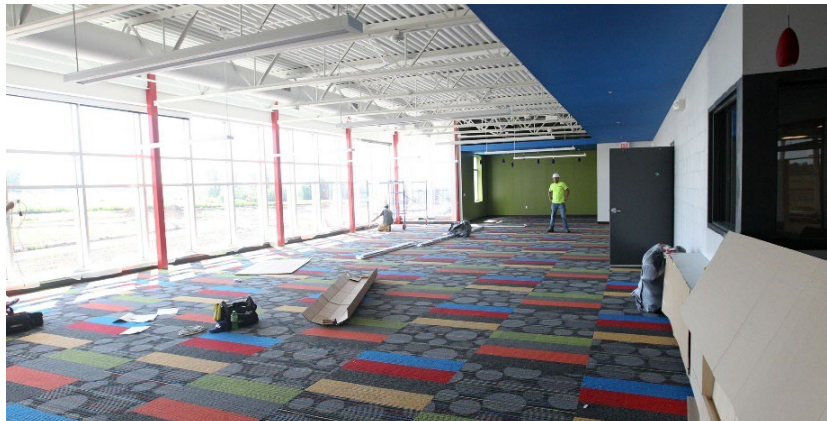
Principal in Charge
Dwight Schumm, PE, LEED AP

Project Manager
Jonathan Gettler, PE

Mechanical Engineer
Kelly Harrer, PE, LEED AP
Adam Bunnell, PE, LEED AP

Electrical Engineer
Jonathan Gettler, PE

Architect
OPN Architects
200 5th Avenue SE #201
Cedar Rapids, Iowa 52401
319 363-6018



Teaming with OPN Architects to Empower Student Success

Iowa City's new Hoover Elementary replaces the existing Hoover Elementary. In 2018, it welcomed students from Longfellow, Lincoln, and Mann Elementary Schools while those historic buildings are renovated. In 2019, existing Hoover students will move into their new building.

Modeled after Iowa City Community School District's most recent school's Alexander and Norman Borlaug, the two-story building's facade carries the school's signature red. offers a community area for students to gather. Windows behind the staircase look out to the playground and bring abundant light into the space. On the second story, the media center cantilevers over the first floor, creating drama at the entry.

The gym, multipurpose room/cafeteria, art and music rooms, and administrative offices also fill this central core. The academic wings radiate to the east and west. The single-story Pre-K and Kindergarten wing has its own entry, with a cantilevered roof and column replicated from the main entrance.

On the opposite end of the building, a two-story wing houses classrooms for the first through sixth grade. Sunscreens across large windows in the art and music rooms allow glare-free light.

